

SMC

Networking Solutions



● Ethernet

● Fast Ethernet

Networking Solutions

- Ethernet
- Fast Ethernet

SMC



Founded in 1997, SMC is a private joint venture between Accton Technology Corporation and Standard Microsystems Corporation. With over 20 years combined experience in LAN solutions technology, these two global leaders have united their resources and expertise to create a powerful new force in the networking industry.

SMC provides a comprehensive portfolio of workgroup and departmental LAN solutions with a low cost of ownership for the small and medium-sized business sector. SMC's products include network cards, stackable hubs, switches and network management software for Ethernet, Fast Ethernet, ATM, Token Ring and ARCNET protocols.* These products are fully compatible with the relevant standards: IEEE 802.3 Ethernet, 802.3u Fast Ethernet and 802.5 Token Ring; as well as ATM Forum specifications. And, they comply with virtually all worldwide safety and emissions standards.

SMC is committed to its customers through personalized, knowledgeable and responsive service and support. And, SMC has recently implemented a new Fast Ethernet strategy—SMC Connect 100—to help customers find workable and cost-effective solutions to the demands for increased network performance.

* See SMC's Networking Solutions Catalog for ATM and Token Ring products, and call for information about SMC's line of ARCNET products.

Customer Satisfaction

◆ Innovative and award-winning products

SMC has won numerous technical merit awards for its innovative products, such as the TigerStack™ family of SwitchReady™, stackable 10 Mbps and 100 Mbps hubs. We have a silicon-centric strategy that gives



us full ownership of the key technology building blocks, including core Ethernet and Fast Ethernet components. This means that we can offer you more features and performance improvements on regular basis, with prices that are globally very competitive.

◆ Quality you can depend on

Our worldwide manufacturing centers are ISO 9002 certified and our adapter design centers are ISO 9001 certified. We have excellent operational teams in place—teams committed to ensure that you receive products of the highest quality and reliability.

◆ Critically acclaimed technical support team

At SMC, toll-free technical support is available before you purchase the product as well as after, for the life of the product. There's also a 30-day money-back guarantee if you're not totally satisfied with your purchase. And, to maximize network uptime in the unlikely event of a product failure, SMC will cross-ship a replacement within 24 hours for next-day delivery in both North America and Western Europe.*

SMC Connect 100

SMC Connect 100 is a Fast Ethernet strategy designed to help customers understand and integrate Fast Ethernet into their networks through cost-effective Fast Ethernet products that solve bandwidth, cabling, distance, 10/100 integration and management issues, as well as a variety of service and support programs developed to educate resellers, VARs and end users to the benefits and practical implementation of Fast Ethernet technology.

For more information on Fast Ethernet technology, send for a copy of SMC's:

- ◆ *Fast Ethernet Evaluation and Integration*
- ◆ *Practical Guide to LAN Switching and Fast Ethernet Integration*
- ◆ *Fast Ethernet Cyber Seminar* (on CD-ROM)

* See Technical Support for details.

Table of Contents

Ethernet/Fast Ethernet Products

Network Cards **6**

Fast Ethernet

EtherPower II 10/100 (PCI/TX)	6
EtherPower 10/100 (PCI/T4/Server)	8
EtherPower 10/100 CardBus	10

Ethernet

EtherPower (PCI)	12
EtherEZ (ISA)	14
EZ Card 10 (PCI/ISA)	16
EtherEZ PC Card	18

Workgroup Hubs **20**

Fast Ethernet

TigerStack 100	20
EZ Hub 100	23
EZ Hub 10/100	24

Ethernet

TigerStack	26
EtherEZ Hubs	29
TigerHub	30

Switches **32**

Fast Ethernet

TigerSwitch 100	32
EZ Switch 100	34
10/100 LAN Extender FX	36

Ethernet

TigerSwitch	38
EZ Switch	41
EZ Switch LW	44
EZ Switch DT	46

Fast Ethernet Bundles **48**

Accessories **50**

Redundant Power Units, Transceivers, T-Connectors	50
----------------------------------------------------------------	----

Network Management Software

EliteView **52**

Technical Support

Contacts **54**

EtherPower II 10/100 PCI Network Card (TX) Ethernet/Fast Ethernet



SMC's EtherPower™ II 10/100 PCI network card sets a new standard in Fast Ethernet performance, reliability and ease of installation. Its highly integrated design is based on advanced SMC silicon and uses Intelligent PowerProcessing features to maximize performance and increase the efficiency of your network.

In addition to reducing network collisions and CPU utilization, this 32-bit card maximizes throughput by increasing the data transfer rate between the network and the PC and also ensuring that it continues even while incoming data is being processed.

The EtherPower II 10/100 also offers the flexibility of dual-speed operation. Its 100BASE-TX port supports Auto-Negotiation, so the optimum operating mode—100 or 10 Mbps and half or full duplex is selected automatically. And, with SMC's new drivers, this card can be configured in a Windows 95 or Windows NT environment without any software utilities.

Features/Benefits

Outstanding Performance

- ◆ SMC's unique SimulTasking™ pipelined data transfer technique for top performance
- ◆ SMC's Programmable InterPacket Gap for maximum throughput
- ◆ Transmit Chaining and Preemptive Interrupt for lowest CPU utilization
- ◆ 32-bit PCI bus-master operation
- ◆ Full-duplex operation at both data rates doubles available bandwidth

Easy to Install and Use

- ◆ Auto-Negotiation for automatic selection of optimum data rate and operating mode
- ◆ NetWare client installation in less than 30 seconds
- ◆ Windows-friendly SuperDisk™ for hassle-free configuration in Windows 95 and NT environments
- ◆ Auto-configurable by most PCI computers
- ◆ EZStart™ utility for easy driver installation
- ◆ Single RJ-45 connector for both data rates
- ◆ Diagnostic LEDs for easy network monitoring
- ◆ Optional Flash boot ROM with DHCP support and virus protection

Best Driver Selection in the Industry

- ◆ Novell NetWare: 3.x/4.x Server, DOS, OS/2, Windows 95, Windows NT Client
- ◆ Microsoft: Windows 95, Windows for Workgroups, Windows NT
- ◆ MacOS System 7 (PowerMAC)
- ◆ UNIX: SCO
- ◆ Many others available on SMC's Bulletin Board and Internet Web Site

Suitable for Residential Use

- ◆ FCC Class B certified

Warranty

- ◆ Limited lifetime

Product/Order No.	Description
EtherPower II 10/100*	
SMC9432TX	10BASE-T/100BASE-TX
Flash Boot ROM	
SMC-EP2ROM	Includes virus protection

* Also available in packs of 5, 20 and 50.

EtherPower 10/100 PCI Network Cards (T4, Server) Ethernet/Fast Ethernet



SMC's EtherPower 10/100 network cards offer the flexibility of dual-speed operation. These 32-bit PCI cards are available in two models.

The dual-channel 100BASE-TX server card supports Auto-Negotiation and combines the functionality of two separate cards. Each channel is independent and supports its own collision domain, so you can segment your network and double its bandwidth while saving a slot in the server.

The single-channel 100BASE-T4 model operates with the most common types of UTP cable: Category 3, 4 or 5, at *both* 10 and 100 Mbps. So, if your site's not wired with certified Category 5 cable, you don't have to go through the expense of rewiring to the desktop for 100BASE-TX cards. And, SMC also offers 100BASE-T4 hubs (see the TigerStack™ 100), so you can make connections without having to purchase an external transceiver. Also, since this card automatically sets its operating speed to match that of the attached device, it's very easy to install.

Features/Benefits

Outstanding Performance

- ◆ SMC's unique SimulTasking pipelined data transfer technique for top performance
- ◆ 32-bit PCI bus-master operation
- ◆ Very low CPU utilization
- ◆ Full-duplex operation doubles available bandwidth (10BASE-T and 100BASE-TX channels only)

Easy to Install and Use

- ◆ Auto-Negotiation for automatic selection of optimum data rate and operating mode (TX card only)
- ◆ Auto-detection for automatic selection of optimum data rate (T4 card only)
- ◆ Auto-configurable by most PCI computers
- ◆ EZStart utility for easy driver installation and troubleshooting
- ◆ Single RJ-45 connector for both data rates
- ◆ Diagnostic LEDs for easy network monitoring
- ◆ Optional Flash boot ROM with virus protection (T4 card only)

Best Driver Selection in the Industry

- ◆ Novell NetWare: 3.x/4.x Server, DOS, OS/2, Windows 95, Windows NT Client
- ◆ Microsoft: Windows 95, Windows for Workgroups, Windows NT
- ◆ MacOS System 7 (PowerMAC)
- ◆ UNIX: SCO
- ◆ Many others available on SMC's Bulletin Board and Internet Web Site

Suitable for Residential Use

- ◆ FCC Class B certified

Warranty

- ◆ Limited lifetime

Product/Order No.	Description
EtherPower 10/100	Single-Channel Card
SMC9332BVT*	10BASE-T/100BASE-T4
	Dual-Channel Server Card
SMC9334BDT	10BASE-T/100BASE-TX
Flash Boot ROM	
SMC-FROM	Includes virus protection (for single-channel card only)

* Also available in packs of 5, 20 and 50.

EtherPower 10/100 CardBus Network Card Ethernet/Fast Ethernet



With SMC's EtherPower 10/100 CardBus PC Card, network connections have just gotten faster. This 32-bit portable PCI network card provides the quickest, easiest and most powerful way to connect to a 10 Mbps Ethernet or 100 Mbps Fast Ethernet network. And, its 100BASE-TX port supports Auto-Negotiation, so the optimum operating mode—100 or 10 Mbps and half or full duplex is selected automatically.

Compatible with CardBus-compliant laptops, the EtherPower 10/100 CardBus PC Card includes drivers that do not require Card and Socket Services (CSS) software. And, it consumes little more than half the power required by older PCMCIA network cards.

Features/Benefits

Outstanding Performance

- ◆ SMC's unique SimulTasking pipelined data transfer technique for top performance
- ◆ 32-bit bus-master operation
- ◆ On-chip DMA reduces CPU utilization
- ◆ Full-duplex operation at both data rates doubles available bandwidth
- ◆ 3.3 V operation extends portable computer's battery life

Easy to Install and Use

- ◆ Auto-Negotiation for automatic selection of optimum data rate and operating mode
- ◆ Plug and play installation
- ◆ Cable module with single RJ-45 connector for both data rates
- ◆ Diagnostic LEDs on cable module for easy viewing

Complete Driver Set

- ◆ Novell NetWare: DOS ODI Workstation
- ◆ Microsoft: Windows 95, Windows for Workgroups, Windows NT, Windows 3.x
- ◆ Many others available on SMC's Bulletin Board and Internet Web Site

Suitable for Residential Use

- ◆ FCC Class B certified

Compliant

- ◆ PCMCIA Type II

Warranty

- ◆ Limited lifetime

Product/Order No.	Description
EtherPower 10/100 CardBus*	
SMC8032DT	10BASE-T/100BASE-TX
Replacement Cable Module	
SMC8032CDT	10BASE-T/100BASE-TX

* Also available in packs of 5.

EtherPower PCI Network Cards Ethernet



SMC's EtherPower network cards are automatically configured upon power up for a truly effortless installation. And, they ship with the best driver selection in the industry.

These 32-bit PCI cards feature bus-master design for superior performance. In addition, they support full-duplex operation, which doubles the effective bandwidth in switched networks.

Features/Benefits

Outstanding Performance

- ◆ SMC's unique SimulTasking pipelined data transfer technique for top performance
- ◆ 32-bit PCI bus-master operation
- ◆ Very low CPU utilization
- ◆ Full-duplex operation doubles available bandwidth

Easy to Install and Use

- ◆ Auto-configurable by most PCI computers
- ◆ Software-selectable media interface on combo models
- ◆ EZStart utility for easy driver installation and troubleshooting
- ◆ Diagnostic LEDs for easy network monitoring
- ◆ Optional Flash boot ROM with virus protection

Easy Desktop Management

- ◆ Free SNMP agent

Best Driver Selection in the Industry

- ◆ Novell NetWare: 386 (3.x/4.x Server), DOS ODI Workstation
- ◆ Microsoft: Windows 95, Windows for Workgroups, Windows NT
- ◆ MacOS System 7 (PowerMAC)
- ◆ NDIS: DOS, OS/2
- ◆ UNIX: SCO
- ◆ Many others available on SMC's Bulletin Board and Internet Web Site

Suitable for Residential Use

- ◆ FCC Class B certified

Warranty

- ◆ Limited lifetime

Product/Order No.	Description
EtherPower*	
SMC8432T	10BASE-T
SMC8432BT	Combo (10BASE-T, BNC)
SMC8432BTA	Combo (10BASE-T, BNC, AUI)
Flash Boot ROM	
SMC-FROM	Includes virus protection
* Also available in packs of 5, 20, 50 and 100.	

EtherEZ ISA Network Cards Ethernet



SMC's EtherEZ™ network cards are exceptionally easy to install and use, and they're the fastest ISA cards we've ever made. According to XXCAL Test Laboratories, EtherEZ cards install in less than 30 seconds, and their performance rivals that of any competitor!

In Plug and Play (PnP) computers, all you have to do is install an EtherEZ card and turn on the power—it's that easy. Even in non-PnP computers, EtherEZ cards install in just a single step.

Features/Benefits

Outstanding Performance

- ◆ SMC's unique SimulTasking pipelined data transfer technique for top performance
- ◆ No shared memory space used when operating in I/O-mapped mode

Easy to Install and Use

- ◆ Installs in less than 30 seconds with a single-command utility
- ◆ Auto-media detect on combo models
- ◆ EZStart utility for easy driver installation and troubleshooting
- ◆ Diagnostic LEDs for easy network monitoring
- ◆ Optional auto-boot ROM

Easy Desktop Management

- ◆ Free SNMP agent

Best Driver Selection in the Industry

- ◆ Novell NetWare: DOS and OS/2 Workstation, 386 (3.x/4.x Server)
- ◆ Microsoft: Windows for Workgroups, Windows NT, Windows 95
- ◆ NDIS: DOS, OS/2
- ◆ UNIX: SCO, Novell UnixWare, Sunsoft, ISC, Solaris x86
- ◆ Many others available on SMC's Bulletin Board and Internet Web Site

Suitable for Residential Use

- ◆ FCC Class B certified

Warranty

- ◆ Limited lifetime

Product/Order No.	Description
EtherEZ*	
SMC8416T	10BASE-T
SMC8416BT	Combo (10BASE-T, BNC)
SMC8416BTA	Combo (10BASE-T, BNC, AUI)
Boot ROM	
SMC-UROM	NetWare, RPL, TCP/IP

* Also available in packs of 5, 20, 50 and 100.

EZ Card 10 ISA/PCI Network Cards Ethernet



SMC's EZ Card™ 10 network cards are among the most affordable on the market today. And, they're backed by the same service and support as our line of high-performance cards.

These 16-bit ISA and 32-bit PCI cards are NE2000 compatible and ship with drivers for today's most popular network operating systems. The drivers are available on SMC's installation diskette or Web site. Also, the cards have an on-board socket for an optional boot ROM.

Additionally, these cards are exceptionally easy to install and use. When installing ISA models in Plug and Play (PnP) computers, all you have to do is turn on the power—it's that easy. And, the PCI models are, of course, fully configurable upon power-up.

Features/Benefits

Operation

- ◆ 32-bit data transfer to maximize throughput (PCI models only)
- ◆ Full-duplex operation doubles available bandwidth

Installation and Use

- ◆ NE2000 compatible
- ◆ Auto-configurable by most PCI computers upon power up (PCI models only)
- ◆ Quick, single-step installation in both Plug and Play (PnP) and non-PnP computers (ISA models only)
- ◆ Auto-media detect on combo models
- ◆ Diagnostic LEDs for easy network monitoring
- ◆ Optional auto-boot ROM

Driver Selection

- ◆ Novell NetWare: 3.x, 4.x, LAN Workplace TCP/IP
- ◆ Microsoft: Windows for Workgroups, Windows NT, Windows 95
- ◆ NDIS: DOS, OS/2
- ◆ UNIX: SCO
- ◆ Packet drivers: FTP TCP/IP, NCSA TCP/IP
- ◆ Drivers available on SMC's Bulletin Board and Internet Web Site

Residential Use

- ◆ FCC Class B certified

Warranty

- ◆ Limited lifetime

Product/Order No.	Description
EZ Card 10*	ISA Models
SMC1660T	10BASE-T
SMC1660BT	Combo (10BASE-T, BNC)
SMC1660BTA	Combo (10BASE-T, BNC, AUI)
	PCI Models
SMC1208T	10BASE-T
SMC1208BT	Combo (10BASE-T, BNC)
SMC1208BTA	Combo (10BASE-T, BNC, AUI)

* Also available in packs of 50.

EtherEZ PC Card Network Card Ethernet



SMC's EtherEZ PC Card is compatible with all leading laptop and notebook computers. This Ethernet PCMCIA network card provides portable convenience along with the features you want most—speed, compatibility, ease of use and low power consumption.

The EtherEZ PC Card is available with a choice of external cable modules. There's a combo model with both RJ-45 and BNC connectors. There's also a 10BASE-T model with one RJ-45 connector.

Features/Benefits

Outstanding Performance

- ◆ SMC's unique SimulTasking pipelined data transfer technique for top performance

Easy to Install and Use

- ◆ Auto-configurable for plug and play installation
- ◆ Windows 95-ready
- ◆ EZStart utility for easy driver installation
- ◆ Single EZStart menu choice automatically configures card and loads NetWare drivers
- ◆ Works well with native Card and Socket Services software (software included with laptop)
- ◆ Auto-media detect on combo model
- ◆ Low power consumption extends portable computer's battery life
- ◆ Hot-swappable so card can be inserted or removed without turning off PC
- ◆ Diagnostic LEDs on cable module for easy viewing
- ◆ Free travel pouch holds all connectivity tools

Complete Driver Set

- ◆ Novell NetWare: DOS ODI, OS/2 ODI
- ◆ Microsoft: Windows 95, Windows for Workgroups, Windows NT, LAN Manager
- ◆ NDIS: DOS, OS/2
- ◆ Packet Driver
- ◆ UNIX: SCO, UnixWare
- ◆ Many others available on SMC's Bulletin Board and Internet Web Site

Suitable for Residential Use

- ◆ FCC Class B certified

Compliant

- ◆ PCMCIA Type II

Warranty

- ◆ Limited lifetime

Product/Order No.	Description
EtherEZ PC Cards*	
SMC8020T	10BASE-T
SMC8020BT	Combo (10BASE-T, BNC)
Replacement Cable Modules	
SMC8020CT	10BASE-T
SMC8020CBT	Combo (10BASE-T, BNC)

* Also available in packs of 5.

TigerStack 100 Family of Stackable Hubs Fast Ethernet



SMC's TigerStack 100 hubs provide a unique combination of scalable bandwidth, network management and switching options to create a flexible and fault-tolerant environment for growing Fast Ethernet networks. They're also the ideal way to introduce Fast Ethernet to your Ethernet LAN.

Every facet is scalable—from stack size and port density to bandwidth, management capabilities, network reach and size. With this truly scalable Fast Ethernet solution, you can “pay as you grow.” Now you can buy what you need only when you need it.

And, the TigerStack 100 is SwitchReady. Each stack can be subdivided into up to 16 segments with a bandwidth potential of 1.6 Gbps. Isolated segments can be interconnected to each other and to an Ethernet network via a Fast Ethernet workgroup switch, such as SMC's TigerSwitch™ 100, or one of the integrated switching options for the TigerStack 100 hubs or Network Management Unit (NMU).

Features/Benefits

Choice of Models

- ◆ Available in 100BASE-TX and 100BASE-T4 models, each with 12 or 24 ports
- ◆ Alternate port with choice of optional slide-in 100BASE-TX or -FX modules

Stackable Eight High

- ◆ Forms a 192-port logical repeater
- ◆ Increases number of users without adding a switch, bridge or router

Segmentable

- ◆ Maximum 16 segments per stack

Scalable

- ◆ Up to 1.6 Gbps of aggregate bandwidth

Easy to Install and Use

- ◆ Rack-mountable
- ◆ Front-panel “at-a-glance” LEDs for easy monitoring and troubleshooting

Manageable Via Optional Unit

- ◆ Single unit manages entire stack
- ◆ In-band management via SNMP and RMON subset (Event, Alarm, Statistics and History groups)
- ◆ Out-of-band management via Console port or SNMP with SLIP
- ◆ Dedicated in-band management port ensures continuous access to management information
- ◆ Front-panel “at-a-glance” LEDs monitor bandwidth utilization of stack
- ◆ Unified multi-segment management with optional Segment Management Modules (SMMs)

Integrated 10/100 Switching

- ◆ Choice of 2- or 4-port Integrated Switch Modules (ISMs) for the TigerStack 100 NMU
- ◆ Choice of 2-port Hub Switch Modules (HSMs) for the TigerStack 100 hubs

RMON Probe Support

- ◆ Optional module converts any Fast Ethernet RMON probe or network analysis tool to a roving multi-segment device
- ◆ Allows management information to be obtained for every segment without moving the probe

EZ Hub 100 Cascadable, Class II Hub Fast Ethernet



Fault-Tolerant

- ◆ Temperature sensor with LED alerts network manager if temperature goes above acceptable limits
- ◆ Redundant power support

Compliant

- ◆ Class I

Warranty

- ◆ Unit—limited lifetime
- ◆ Power supply and fan—five years

Product/Order No.	Description
TigerStack 100 Hubs*	
	Ports
SMC5312TX	12 100BASE-TX
SMC5324TX	24 100BASE-TX
SMC5312T4	12 100BASE-T4
SMC5324T4	24 100BASE-T4

Hub Options

SMC5300-CABLE	Stacking Cable
SMC5300-SMM	Segment Management Module

Alternate Slide-in Modules

SMC5300-TX	100BASE-TX
SMC5300-FXSC	100BASE-FX (SC connector)

Hub Switch Modules (HSMs)

SMC5300-HSM	1 10BASE-T/100BASE-TX
SMC5300-HSM/FXSC	1 100BASE-FX (SC connector)

TigerStack 100 Network Management Unit (NMU)*

SMC5300-NMU	Rack-mountable SNMP and RMON Management Unit with Stacking Cable
-------------	------------------------------------------------------------------

NMU Options

Integrated Switch Modules

SMC5300-STX	1 10BASE-T/100BASE-TX
SMC5300-SFX	1 10BASE-T/100BASE-TX, 1 100BASE-FX (SC connector)
SMC5300-STXFX	2 10BASE-T/100BASE-TX, 1 100BASE-FX (SC connector)
SMC5300-STX4	3 10BASE-T/100BASE-TX

RMON Probe Switch Module

SMC5300-RPS	Operates with any external Network Analysis Tool
-------------	--------------------------------------------------

Network Management Software (see EliteView)

ELITEVIEW x.x	SNMP- and RMON-based software
---------------	-------------------------------

Redundant Power Unit (see Accessories)

SMCRPUX5	Rack-mountable, supports 5 devices
----------	------------------------------------

* Also available with power cord for Continental Europe or UK (add EUR or UK to Order Number).

SMC's EZ Hub™ 100 gives you easy access to a Fast Ethernet network at a very affordable price. With its eight 100BASE-TX ports, this hub is ideal for small businesses and for small workgroups of power users and servers.

Features/Benefits

Easy to Install and Use

- ◆ Plug and play—no software to load
- ◆ Cascadable in pairs to build larger networks
- ◆ Integrated port and status LEDs on front panel for easy network monitoring
- ◆ Redundant power support

Compliant

- ◆ Class II

Warranty

- ◆ Three years

Product/Order No.	Description
EZ Hub 100*	
	Ports
SMC5208TX	8 100BASE-TX
Redundant Power Unit (see Accessories)	
SMCRPUX1	Supports 1 device

* Also available with power cord for Continental Europe or UK (add EUR or UK to Order Number).

EZ Hub 10/100 Dual-Speed Hubs Fast Ethernet



SMC's EZ Hub 10/100 dual-speed hubs combine the functionality of an Ethernet hub and a Fast Ethernet hub with a 2-port switch to ease the migration from Ethernet to Fast Ethernet technology.

There's a 12-port model and another model with 24 ports. Each port can be connected to either a 100BASE-TX or 10BASE-T device. The hub's auto-sensing function automatically directs the traffic to the appropriate segment, and the internal 2-port switch supports intersegment communications. Each model also supports an MII port, so these hubs can be connected to alternate media types (i.e., 100BASE-T4 and 100BASE-FX) with the appropriate transceiver.

Features/Benefits

Outstanding Performance

- ◆ 200 Mbps of intersegment bandwidth
- ◆ Buffered store-and-forward switching between segments
- ◆ 4 K MAC address table

Easy to Install and Use

- ◆ Desktop or rack-mountable
- ◆ Plug and play
- ◆ Auto-sensing function automatically directs data to appropriate segment
- ◆ Extensive self-test diagnostics
- ◆ Front-panel "at-a-glance" LEDs for easy network monitoring and troubleshooting

Versatile

- ◆ MII port for alternate Fast Ethernet media types

Compliant

- ◆ RJ-45 ports—Class (II) at 100 Mbps
- ◆ MII port—Class (I)

Warranty

- ◆ Three years

Product/Order No.	Description
EZ Hub 10/100*	Ports
SMC5512DS	12 10BASE-T/100BASE-TX, 1 MII
SMC5524DS	24 10BASE-T/100BASE-TX, 1 MII

* Also available with power cord for Continental Europe or UK (add EUR or UK to Order Number).

TigerStack Family of Stackable Hubs Ethernet



SMC's TigerStack hubs provide a powerful combination of scalable bandwidth and network management options to create a flexible environment for growing Ethernet networks.

The TigerStack is SwitchReady. Each hub can be subdivided into two or four segments, depending upon the model, so a fully-configured stack has a bandwidth potential of 320 Mbps. Microsegmentation, by reducing the number of nodes on a segment, minimizes contention and boosts the available bandwidth per node, so you can easily allocate and scale bandwidth to workgroups that need it. And, isolated segments can be interconnected via an Ethernet workgroup switch, such as one of SMC's TigerSwitch or EZ Switch models.

These hubs are available with 10BASE-T, Telco, coax, fiber and AUI connectors and from eight to 28 ports to address a wide variety of customer configurations, so you're sure to find just the right hubs for your network.

Features/Benefits

Choice of Models

- ◆ **TigerStack 3312TA**—two-segment hub (divisible into 7- or 14-port segments) with 12 10BASE-T ports, two expansion ports and redundant power support
- ◆ **TigerStack 3326TA**—four-segment hub (divisible into 7-, 14-, 21- or 28-port segments) with 26 10BASE-T ports, two expansion ports and redundant power support
- ◆ **TigerStack 3314T**—two-segment hub* with 14 10BASE-T ports
- ◆ **TigerStack 3328T**—four-segment hub* with 28 10BASE-T ports
- ◆ **TigerStack 3306BC**—two-segment hub[†] with 6 BNC ports, one AUI port and one 10BASE-T port
- ◆ **TigerStack 3306FC**—two-segment hub[†] with 6 dual ST ports, one AUI port and one BNC port
- ◆ **TigerStack 3328TELCO**—four-segment hub* with 28 10BASE-T ports: 24 ports on two Telco connectors and four RJ-45 ports
- ◆ **Optional slide-in modules for expansion ports**—10BASE-T, BNC, AUI and dual ST

Stackable Eight High

- ◆ Forms a 224-port logical repeater to increase number of users without adding repeater hops
- ◆ Allows media types and port densities to be mixed

Segmentable

- ◆ Maximum 32 segments per stack

Scalable

- ◆ Up to 320 Mbps of aggregate bandwidth

Easy to Install and Use

- ◆ Rack-, table- or wall-mount chassis design
- ◆ Front-panel "at-a-glance" LEDs for easy monitoring and troubleshooting
- ◆ Automatic polarity detection and correction on twisted-pair ports
- ◆ Extended distance support for both 10BASE-T and thin coax cable

* Divisible into 7-port segments.

† Divisible into 4-port segments.

Manageable Via Optional Module

- ◆ Single module manages entire stack
- ◆ In-band management via SNMP
- ◆ Out-of-band management via Console port or SNMP with SLIP

Fault-Tolerant

- ◆ Redundant power support (TA models only)

Warranty

- ◆ Unit—limited lifetime
- ◆ Power supply and fan—five years

EtherEZ Hubs

Small and Home Office Hubs

10BASE-T Ethernet



SMC's trio of 10BASE-T EtherEZ hubs are ideal for the home office and for small to mid-sized offices everywhere. The 5-port model is FCC Class B certified. It's suitable for desktop or wall-mounting and comes with its own stand. The 8- and 16-port models may be desktop or rack-mounted and include additional ports for backbone or mixed media connectivity.

Features/Benefits**Easy to Install and Use**

- ◆ Plug and play—no software to load
- ◆ "At-a-glance" LEDs for easy network monitoring
- ◆ Bandwidth utilization LEDs on 16-port model to monitor level of network traffic

Warranty

- ◆ Limited lifetime on unit, five years on power supply

Product/Order No.	Description
TigerStack Hubs*	
SMC3312TA	Ports 12 10BASE-T, 2 expansion
SMC3326TA	24 10BASE-T, 2 expansion
SMC3314T	14 10BASE-T
SMC3328T	28 10BASE-T
SMC3328TELCO	2 Telco, 4 10BASE-T
SMC3306BC	6 BNC, 1 10BASE-T, 1 AUI
SMC3306FC	6 ST, 1 BNC, 1 AUI
Options for 3312TA and 3326TA Hubs	
Slide-in Modules for Expansion Ports	
SMC3300-T	10BASE-T
SMC3300-C	BNC
SMC3300-F	ST
SMC3300-A	AUI
Redundant Power Units (see Accessories)	
SMCRPUX5	Rack-mountable, supports 5 TA hubs
SMCRPUX1	Supports 1 TA hub
Options for All Hubs	
SMC3300-CABLE	Stacking Cable
SMC3300-NMM	Network Management Module
ELITEVIEW x.x	SNMP-based Network Management Software, requires NMM (see EliteView)
Bundles	
SMC3312TAi	SMC3312TA with factory-installed SMC3300-NMM**
SMC3326TAi	SMC3326TA with factory-installed SMC3300-NMM**
* Also available with power cord for Continental Europe or UK (add EUR or UK to Order Number).	
** Includes free coupon for on-line Internet access to ELITEVIEW.	

Product/Order No.	Description
EtherEZ Hub*	
SMC3605T-EZ	Ports 5 10BASE-T plus Hub Stand
SMC3608TAC-EZ	8 10BASE-T, 1 switchable BNC/AUI
SMC3616TC-EZ	16 10BASE-T, 1 BNC, 1 AUI
* Also available with power cord for Continental Europe, UK, South Africa or Australia (add EUR, UK, SA or AUS to Order Number).	

TigerHub Versatile Workgroup Hubs Ethernet



With SMC's TigerHub™ family, you can choose from 10BASE-T, thin coax and fiber hubs, each with one or two extra ports for easy backbone or mixed media connectivity.

There are two desktop models: a 6-port 10BASE-T hub and a 3-port BNC hub. Each has an additional AUI port. With their low profile and small footprint, these hubs are ideal for small workgroups and remote branch offices.

There are also three rack-mountable models for larger workgroups: a 12-port 10BASE-T hub, and 6-port thin coax and fiber hubs. Each has two additional ports: AUI plus either BNC or RJ-45. These hubs can be segmented to double the bandwidth of the network.

Features/Benefits

Desktop Models

- ◆ Table- or wall-mount chassis design
- ◆ Low profile, only 1.2 in. high

Rack-mountable Models

- ◆ Divisible into two segments with an aggregate bandwidth of 20 Mbps
- ◆ Rack-, table- or wall-mount chassis design

Easy to Install and Use

- ◆ Plug and play—no software to load
- ◆ Extended distance support: 128 m for twisted-pair cable and 300 m for thin coax cable
- ◆ Front-panel “at-a-glance” LEDs for easy network monitoring and troubleshooting
- ◆ Automatic polarity detection and correction on twisted-pair ports
- ◆ Smart squelch digital noise filter on twisted-pair ports for reliable communication over varying line quality

Warranty

- ◆ Three years

Product/Order No.	Description
TigerHub	
Rack-mountable Models*	
SMC3212TC	12 10BASE-T, 1 BNC, 1 AUI
SMC3206BC	6 BNC, 1 10BASE-T, 1 AUI
SMC3206FC	6 ST, 1 BNC, 1 AUI
Desktop Models**	
SMC3206TA	6 10BASE-T, 1 AUI
SMC3203BA	3 BNC, 1 AUI
* Also available with power cord for Continental Europe or UK (add EUR or UK to Order Number).	
** Also available in 240 V model (add 240 to Order Number).	

TigerSwitch 100 Intelligent Switch Fast Ethernet



SMC's TigerSwitch 100 is a high-performance, yet affordable, manageable Fast Ethernet switch that is perfect for high-traffic environments. Its eight 100BASE-TX ports support Auto-Negotiation, so the optimum operating mode—100 or 10 Mbps and half or full duplex—is selected automatically for each port.

You can use it as a segment switch to expand the size and boost the bandwidth of a Fast Ethernet LAN, and also to connect to a 10 Mbps Ethernet legacy LAN. And, with its 1.6 Gbps of internal bandwidth, the TigerSwitch 100 is powerful enough to serve as a high-speed departmental collapsed backbone, or backbone-in-a-box, supporting multiple Fast Ethernet switches and servers.

Features/Benefits

Outstanding Performance

- ◆ Supports adaptive cut-through mode—an intelligent, dynamic architecture that alternates automatically between forwarding modes for best possible performance
- ◆ Error checking prevents bad packets from being propagated throughout the network
- ◆ Non-blocking architecture allows simultaneous wire-speed transport of multiple packets at very low latency
- ◆ Filtering and forwarding at full wire speed on all ports
- ◆ Flow control to prevent packet loss
- ◆ Automatic address learning and user-defined aging
- ◆ Full-duplex mode selectable on per port basis

Easy to Install and Use

- ◆ Auto-Negotiation for automatic selection of optimum data rate and operating mode
- ◆ Desktop or rack-mountable
- ◆ Diagnostic self-test procedures
- ◆ Easily configured via menu-driven software
- ◆ Software downloads and upgrades via TFTP or Console port with non-volatile parameter storage
- ◆ Comprehensive array of LEDs for “at-a-glance” monitoring of traffic on all segments
- ◆ Spanning Tree support (IEEE 802.1d) to allow creation of secondary data paths

Manageable

- ◆ In-band management via Telnet or SNMP
- ◆ Out-of-band management via Console port

Fault-Tolerant

- ◆ Redundant power support

Warranty

- ◆ Three years

Product/Order No.	Description
TigerSwitch 100*	Ports
SMC-6608T	8 10BASE-T/100BASE-TX
Network Management Software (see EliteView)	
ELITEVIEW x.x	SNMP-based software
Redundant Power Unit (see Accessories)	
SMCRPUX5	Rack-mountable, supports 5 devices

* Also available with power cords for Continental Europe and UK (add INT to Order Number).

EZ Switch 100 Switch Fast Ethernet



SMC's EZ Switch™ 100 is a high-performance, yet affordable, plug and play Fast Ethernet switch that is perfect for high-traffic environments. Its eight 100BASE-TX ports support Auto-Negotiation, so the optimum operating mode—100 or 10 Mbps and half or full duplex—is selected automatically for each port.

You can use it as a segment switch to expand the size and boost the bandwidth of a Fast Ethernet LAN, and also to connect to a 10 Mbps Ethernet legacy LAN. And, with its 1.6 Gbps of internal bandwidth, the EZ Switch 100 is powerful enough to serve as a high-speed departmental collapsed backbone, or backbone-in-a-box, supporting multiple Fast Ethernet switches and servers.

Features/Benefits

Outstanding Performance

- ◆ Supports adaptive cut-through mode—an intelligent, dynamic architecture that alternates automatically between forwarding modes for best possible performance
- ◆ Error checking prevents bad packets from being propagated throughout the network
- ◆ Non-blocking architecture allows simultaneous wire-speed transport of multiple packets at very low latency
- ◆ Filtering and forwarding at full wire speed on all ports
- ◆ Flow control to prevent packet loss
- ◆ Automatic address learning
- ◆ Full-duplex mode selectable on per port basis

Easy to Install and Use

- ◆ Auto-Negotiation for automatic selection of optimum data rate and operating mode
- ◆ Desktop or rack-mountable
- ◆ Easily configured via push-button
- ◆ Comprehensive array of LEDs for “at-a-glance” monitoring of traffic on all segments

Fault-Tolerant

- ◆ Redundant power support

Warranty

- ◆ Three years

Product/Order No.	Description
EZ Switch 100*	Ports
SMC-EZ108	8 10BASE-T/100BASE-TX
Redundant Power Unit (see Accessories)	
SMCRPUX5	Rack-mountable, supports 5 devices

* Also available with power cords for Continental Europe and UK (add INT to Order Number).

10/100 LAN Extender FX Two-Port Switch Fast Ethernet



SMC's 10/100 LAN Extender FX connects an Ethernet or Fast Ethernet network to a Fast Ethernet fiber backbone. This two-port switch contains one 100BASE-TX port and one 100BASE-FX port. The 100BASE-TX port supports Auto-Negotiation, so the optimum operating mode—100 or 10 Mbps and half or full duplex—is selected automatically.

In full-duplex mode, the LAN Extender can transmit data up to 2 km over fiber cable. This switch can be connected to a 10BASE-T Ethernet or 100BASE-TX Fast Ethernet hub to extend the reach of the network. It can also be used as a media converter with an Ethernet or Fast Ethernet switch.

Features/Benefits

Outstanding Performance

- ◆ 400 Mbps of aggregate bandwidth
- ◆ Non-blocking architecture reduces latency
- ◆ Filtering and forwarding at full wire speed on all ports
- ◆ Automatic address learning and user-defined aging with 4,096 entry address table
- ◆ Flow control to prevent packet loss
- ◆ Full-duplex operation doubles the bandwidth of each segment and extends Fast Ethernet transmission distance on 100BASE-FX port

Easy to Install and Use

- ◆ Auto-Negotiation on twisted-pair port for automatic selection of optimum data rate and operating mode
- ◆ Plug and play; no software to load
- ◆ Diagnostic self-test procedures
- ◆ Comprehensive array of LEDs for “at-a-glance” monitoring of traffic on both segments
- ◆ Easily mounts on any flat surface

Versatile

- ◆ Choice of 10 Mbps or 100 Mbps operation on twisted-pair port
- ◆ Single RJ-45 connector for both data rates
- ◆ Choice of crossover or Daisy-Chain port
- ◆ Supports fiber run of 2 km in full-duplex mode

Warranty

- ◆ Three years

Product/Order No.	Description
10/100 LAN Extender FX*	Ports
SMC6602FX	1 10BASE-T/100BASE-TX 1 100BASE-FX (SC connector)

* Also available with power cords for Continental Europe and UK (add INT to Order Number).

TigerSwitch

Intelligent Workgroup Switches Ethernet/Fast Ethernet



SMC's TigerSwitch family provides a combination of Ethernet and Fast Ethernet switching plus a variety of management capabilities, including SNMP and RMON, so you can choose the level of management that's right for you.

They're available with eight or 16 10BASE-T ports. In addition, these full-featured switches each have two Fast Ethernet ports, so you can integrate this higher-speed technology into your Ethernet LAN to relieve server bottlenecks, support power users or connect to a high-speed backbone. And, they support full-duplex operation on every port, so you can double the bandwidth of those server and switch connections. Whichever one you choose, you'll have everything you need to relieve congestion on your high-traffic network.

Features/Benefits

Choice of Models

- ◆ **TigerSwitch 16TT**—16 10BASE-T ports plus two 100BASE-TX ports
- ◆ **TigerSwitch 16TF**—16 10BASE-T ports plus one 100BASE-TX port and one 100BASE-FX port
- ◆ **TigerSwitch 16FF**—16 10BASE-T ports plus two 100BASE-FX ports
- ◆ **TigerSwitch 8TT**—eight 10BASE-T ports plus two 100BASE-TX ports
- ◆ **TigerSwitch 8TF**—eight 10BASE-T ports plus one 100BASE-TX port and one 100BASE-FX port
- ◆ **TigerSwitch 8T8**—eight 10BASE-T ports plus one 100BASE-TX port and an integrated Class II, cascadable repeater with eight 100BASE-TX ports

Outstanding Performance

- ◆ Buffered store-and-forward architecture to prevent propagation of bad packets
- ◆ Non-blocking architecture allows simultaneous wire-speed transport of multiple packets at very low latency
- ◆ Automatic address learning and user-defined aging
- ◆ Redundant power support
- ◆ Full-duplex mode selectable on per port basis

Easy to Install and Use

- ◆ Auto-Negotiation on 100BASE-TX ports for automatic selection of optimum data rate and operating mode
- ◆ Desktop or rack-mountable
- ◆ Diagnostic self-test procedures
- ◆ Easily configured via menu-driven software
- ◆ Software downloads and upgrades via TFTP
- ◆ Non-volatile parameter storage
- ◆ Front-panel "at-a-glance" LEDs for easy network monitoring and troubleshooting
- ◆ Port Mirroring for advanced network troubleshooting
- ◆ DHCP client support for IP address administration

Manageable

- ◆ In-band management via Telnet or SNMP
- ◆ Out-of-band management via Console port
- ◆ Four-group RMON support (Statistics, History, Alarm and Events)
- ◆ Spanning Tree support (IEEE 802.1d) to allow creation of secondary data paths

EZ Switch Workgroup Switches Ethernet/Fast Ethernet



SMC's EZ Switch family makes it easy to boost the bandwidth of your Ethernet workgroups and protect your investment in legacy LAN equipment at the same time.

These plug and play switches are available with eight or 16 10BASE-T ports. In addition, the EZ Switch 16+2 and 8+2 models have two Fast Ethernet ports, so you can integrate this higher-speed technology into your Ethernet LAN to relieve server bottlenecks, support power users or connect to a high-speed backbone. And, these models support full-duplex operation on every port (the EZ Switch 8, on only two ports), so you can double the bandwidth of those server and switch connections. Whichever one you choose, you'll have everything you need to relieve congestion on your high-traffic network.

Versatile

- ◆ Replaceable Fast Ethernet module for added flexibility (16+2 models only)

Warranty

- ◆ Three years

Product/Order No.	Description
TigerSwitch 16+2*	
Ports	
SMC-6516TT	16 10BASE-T, 2 10BASE-T/100BASE-TX
SMC-6516TF	16 10BASE-T, 1 10BASE-T/100BASE-TX, 1 100BASE-FX (SC connector)
SMC-6516FF	16 10BASE-T, 2 100BASE-FX (SC connector)
TigerSwitch 8+2*	
Ports	
SMC-6508TT	8 10BASE-T, 2 10BASE-T/100BASE-TX
SMC-6508TF	8 10BASE-T, 1 10BASE-T/100BASE-TX, 1 100BASE-FX (SC connector)
SMC-6508T8T	8 10BASE-T, 1 10BASE-T/100BASE-TX, 8-port 100BASE-TX hub
Replaceable Fast Ethernet Modules (for TigerSwitch 16+2)	
SMC6016TT	2 10BASE-T/100BASE-TX
SMC6016TF	1 10BASE-T/100BASE-TX, 1 100BASE-FX (SC connector)
SMC6016FF	2 100BASE-FX (SC connector)
Redundant Power Units	
SMCRPUX1	Supports 1 device
SMCRPUX5	Rack-mountable, supports 5 devices
* Includes free coupon for on-line Internet access to ELITEVIEW. Also available with power cords for Continental Europe and UK (add INT to Order Number).	

Features/Benefits

Choice of Models

- ◆ **EZ Switch 16TT**—16 10BASE-T ports plus two 100BASE-TX ports
- ◆ **EZ Switch 16TF**—16 10BASE-T ports plus one 100BASE-TX port and one 100BASE-FX port
- ◆ **EZ Switch 8TT**—8 10BASE-T ports plus two 100BASE-TX ports
- ◆ **EZ Switch 8TF**—8 10BASE-T ports plus one 100BASE-TX port and one 100BASE-FX port
- ◆ **EZ Switch 8**—8 10BASE-T ports

Outstanding Performance

- ◆ Buffered store-and-forward architecture to prevent propagation of bad packets
- ◆ Non-blocking architecture allows simultaneous wire-speed transport of multiple packets at very low latency
- ◆ Automatic address learning
- ◆ Redundant power support
- ◆ Full-duplex mode selectable on per port basis

Easy to Install and Use

- ◆ Auto-Negotiation on 100BASE-TX ports for automatic selection of optimum data rate and operating mode
- ◆ Desktop or rack-mountable
- ◆ Easily configured to the port level via rear-panel dip switches
- ◆ Front-panel “at-a-glance” LEDs for easy network monitoring and troubleshooting

Versatile

- ◆ Replaceable Fast Ethernet module for added flexibility (16+2 models only)

Warranty

- ◆ Three years

Product/Order No.	Description
EZ Switch 16+2*	
SMC-6416TT	16 10BASE-T, 2 10BASE-T/100BASE-TX
SMC-6416TF	16 10BASE-T, 1 10BASE-T/100BASE-TX, 1 100BASE-FX (SC connector)
EZ Switch 8+2*	
Ports	
SMC-6408TT	8 10BASE-T, 2 10BASE-T/100BASE-TX
SMC-6408TF	8 10BASE-T, 1 10BASE-T/100BASE-TX, 1 100BASE-FX (SC connector)
EZ Switch 8*	
Ports	
SMC-EZ008	8 10BASE-T
Replaceable Fast Ethernet Modules (for EZSwitch 16+2)	
SMC6016TT	2 10BASE-T/100BASE-TX
SMC6016TF	1 10BASE-T/100BASE-TX, 1 100BASE-FX (SC connector)
SMC6016FF	2 100BASE-FX (SC connector)
Redundant Power Units	
SMCRPUX1	Supports one device
SMCRPUX5	Rack-mountable, supports five devices
* Also available with power cords for Continental Europe and UK (add INT to Order Number).	

EZ Switch LW Large Workgroup Switches Ethernet/Fast Ethernet



SMC's pair of EZ Switch LW large workgroup switches combine Ethernet and Fast Ethernet switching with practical management in a high port density package.

In addition to 25 Ethernet ports, both switches also contain two Fast Ethernet ports, so you can integrate this higher-speed technology into your Ethernet LAN to relieve server bottlenecks, support power users or connect to a high speed backbone. And, they support full-duplex operation on every twisted-pair port, so you can double the bandwidth of those server and switch connections.

Although essentially plug and play devices, these switches are easily configurable via the front-panel Configure button and/or the Console Interface. You can enable and disable ports, as well as set operating and switching modes on a per/port basis. You can also monitor the status and bandwidth utilization of any port with the front-panel "at-a-glance" LEDs and EZ Eye View LED array.

Features/Benefits

Outstanding Performance

- ◆ 900 Mbps of aggregate bandwidth
- ◆ Supports both cut-through and buffered store-and-forward switching
- ◆ Non-blocking architecture allows simultaneous wire-speed transport of multiple packets at very low latency
- ◆ Filtering and forwarding at full wire speed on all ports
- ◆ 8 Mbytes shared memory packet buffer for concurrent operation of up to 27 segments
- ◆ Full-duplex mode selectable on a per port basis

Easy to Install and Use

- ◆ Auto-Negotiation on 100BASE-TX ports for automatic selection of optimum data rate and operating mode
- ◆ Desktop or rack-mountable
- ◆ Plug and play; no software to load
- ◆ Front-panel "at-a-glance" LEDs for easy network monitoring and troubleshooting
- ◆ Easily configurable on a per/port basis via the Configure button and/or Console Interface
- ◆ "EZ Eye View" LED display of bandwidth utilization histogram

Versatile

- ◆ Replaceable Fast Ethernet modules for added flexibility
- ◆ Choice of 100BASE-TX crossover or Daisy-Chain port

Warranty

- ◆ Three years

Product/Order No.	Description
EZ Switch LW*	Ports
SMC6425LW/TT	24 10BASE-T, 2 10BASE-T/100BASE-TX, 1 AUI
SMC6425LW/TF	24 10BASE-T, 1 10BASE-T/100BASE-TX, 1 100BASE-FX (SC connector), 1 AUI

Replaceable Fast Ethernet Modules

SMC6X25LW/T	1 10BASE-T/100BASE-TX
SMC6X25LW/F	1 100BASE-FX (SC connector)

* Also available with power cords for Continental Europe and UK (add INT to Order Number).

EZ Switch DT Desktop Switch Ethernet



SMC's EZ Switch DT brings switching to the desktop at the price of a 10BASE-T hub. This 24-port desktop switch is the ideal replacement for a standard Ethernet hub in peer-to-peer and multi-server environments.

Each port provides a dedicated 10 Mbps connection to a *single* workstation or server. The uplink port, when switched to daisy-chain mode, can be connected to a shared segment via a hub or to other network segments via a switch.

Features/Benefits

Outstanding Performance

- ◆ 240 Mbps of aggregate bandwidth
- ◆ Simultaneous conversations in peer-to-peer or multi-server environments
- ◆ Cut-through forwarding mode, which begins forwarding a packet before it has been fully received
- ◆ Non-blocking architecture allows simultaneous wire-speed transport of multiple packets at very low latency
- ◆ Filtering and forwarding at full wire speed on all ports
- ◆ Small, 24-entry MAC address table with automatic address learning

Easy to Install and Use

- ◆ Desktop or rack-mountable
- ◆ Plug and play
- ◆ Front-panel "at-a-glance" LEDs for easy network monitoring and troubleshooting

Versatile

- ◆ Cascadable uplink port for network expansion

Warranty

- ◆ Three years

Product/Order No.	Description
EZ Switch DT*	Ports
SMC6424DT	24 10BASE-T

* Also available with power cords for Continental Europe and UK (add INT to Order Number).

Workgroup Bundles for Small and Larger Growing Workgroups Fast Ethernet

Solutions for Larger Growing Networks

For networks of 20 or more users, SMC has coupled two terrific products to create a flexible environment for growing Fast Ethernet networks:

◆ 24-port TigerStack 100 (100BASE-TX) Hub

SMC's 24-port TigerStack 100 hub is segmentable and SwitchReady, so you can easily subdivide it into two, three or four segments and top it with a switch for increased bandwidth. And, it's stackable eight high, so your workgroup can grow to 192 users. There's even an optional unit for SNMP and RMON management, and another for redundant power support. With all these features, TigerStack 100 hubs are the ideal choice for growing networks of power users.



◆ EtherPower II 10/100 Network Cards, 20-pack

This high-performance card offers SMC's Intelligent PowerProcessing, a feature set that maximizes data throughput and minimizes CPU utilization. And, in addition to the broadest driver support in the industry, the EtherPower II 10/100 includes a one-step software utility for NetWare and a Windows-friendly SuperDisk for hassle-free configuration in both Windows 95 and Windows NT environments.



Solutions for Small Networks

For networks of five or more users, SMC has paired two great products to give you easy access to a Fast Ethernet network at a very affordable price:

◆ EZ Hub 100 (100BASE-TX) Hub

With SMC's 8-port EZ Hub 100 hub, there's no configuration necessary. Just plug it in and it's ready to go to work for you. And, as your network grows, you can cascade it to another Class II hub for additional users or connect it to a switch to increase both the bandwidth and reach of your network. There's even an optional unit for redundant power support. This plug and play hub is perfect for power workgroups and server farms.



◆ EtherPower II 10/100 Network Cards, 5-pack

This SMC card offers exceptional performance, reliability and ease of installation. With its one-step software utilities, Windows-friendly SuperDisk, and broad driver support, configuration's a snap.



Product/Order No.	Description
Workgroup Bundles*	
SMC5324-20PCI	1 TigerStack 100 Hub (SMC5324TX) and 20 EtherPower II 10/100 cards (SMC9432TX-20)
SMC5208-05PCI	1 EZ Hub 100 (SMC5208TX) and 5 EtherPower II 10/100 cards (SMC9432TX-20)

* Also available with power cords for Continental Europe and UK (add EUR or UK to Order Number).

Accessories for SMC Networking Devices Ethernet/Fast Ethernet



Accessories for SMC's networking devices include a pair of Redundant Power Units, a family of Ethernet transceivers, and a pack of BNC T-Connectors.

The Redundant Power Units minimize downtime in the event of an internal power supply failure or AC circuit loss. The transceivers are compact, 2-port devices that can connect any Ethernet network card, hub or switch to a different type of media. The T-Connectors are used to connect 10BASE2 Ethernet products to thin coax cable.

Features/Benefits

Redundant Power Unit — SMCRPUX5

- ◆ Supplies 90 W of power to each of five devices
- ◆ Separate AC line cord so attached devices can be connected to one circuit breaker and RPU to another
- ◆ Fan sensor and status LED indicate whether or not fans are operating properly
- ◆ Status LEDs indicate when output power is available to attached devices
- ◆ Rack-mountable
- ◆ Three-year warranty

Redundant Power Unit — SMCRPUX1

- ◆ Supplies 40 W of power to one device
- ◆ Separate AC line cord so attached devices can be connected to one circuit breaker and RPU to another
- ◆ Molded DC line cord provides output power to attached device
- ◆ Three-year warranty

Ethernet Transceivers

- ◆ Two ports: AUI and choice of 10BASE-T, BNC or fiber
- ◆ Compact design allows direct connection to device
- ◆ Switch disables heartbeat before connection to hub
- ◆ Link integrity test automatically checks twisted-pair and fiber connections
- ◆ Diagnostic LEDs for easy troubleshooting
- ◆ Collision detection
- ◆ Three-year warranty

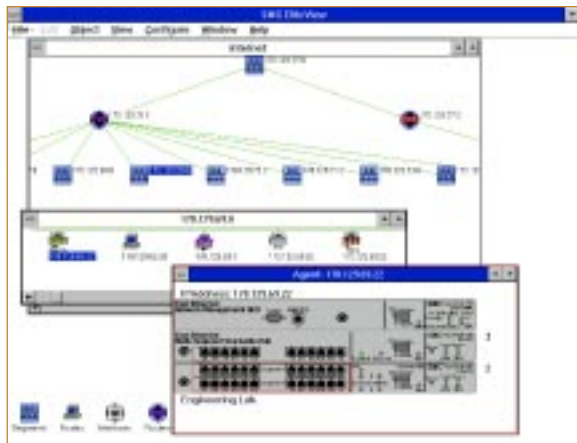
BNC T-Connectors

- ◆ 100 connectors per pack

Product/Order No.	Description
Redundant Power Units*	
SMCRPUX5	Rack-mountable, supports 5 devices
SMCRPUX1	Supports 1 device
Ethernet Transceivers	
SMC3402TP	10BASE-T, AUI
SMC3402BNC	BNC, AUI
SMC3402F	ST, AUI
BNC T-Connectors	
SMCTCONN/100PK	100 per pack

* Include power cords for US, Continental Europe and UK.

EliteView Network Management Software Windows-based Application



SMC's EliteView™ is the easy way to monitor and control SMC's intelligent Ethernet, Fast Ethernet and Token Ring products. Use it to view your entire network, from the desktop to the wiring closet.

EliteView automatically locates and inventories network cards, hubs, switches and MAUs, creating logical road maps. It provides a drawing tool which you can use with maps, floor plans or other "wallpaper" backgrounds and object-oriented icons to create customized, hierarchical map views.

EliteView helps you detect and resolve network problems by giving you quick access to device management and configuration information via real-time graphical and statistical displays, a MIB browser, and trap/event notification. And, it supports Microsoft's Dynamic Data Exchange (DDE), so you can create SNMP links to other DDE-based applications, such as Excel and Paradox.

Features/Benefits

Easy to Install and Use

- ◆ Graphical user interface
- ◆ Windows-based with mouse support
- ◆ Context-sensitive on-line help
- ◆ Point-and-click functions
- ◆ Status "at-a-glance" summary screens
- ◆ Real-time graphic display of status LEDs, Agents and statistics
- ◆ MIB browsing

Fault Management

- ◆ Disable problem ports remotely
- ◆ Immediate visual notification of SNMP traps

Performance Management

- ◆ Real-time graphic display of MAC-layer error and performance statistics
- ◆ Graphic displays of performance and traffic statistics over time

Configuration Management

- ◆ Hierarchical network maps
- ◆ Drawing tools and "drag-and-drop" icons for customized viewing
- ◆ Selection of addresses and switch forwarding methods

Security Management

- ◆ Changeable passwords and community strings

Accounting Management

- ◆ Monitor disk space utilization
- ◆ Survey multiple locations simultaneously
- ◆ Track the number of frames received or transmitted and the number of collisions or errors

Compatible

- ◆ SNMP
- ◆ Dynamic Data Exchange (DDE) engine for creation of customized applications

Warranty

- ◆ Ninety days

Product/Order No.	Description
EliteView ELITEVIEW x.x	Windows-based SNMP Network Management Software

Customer Satisfaction Guarantee Technical Support Phone and Fax Numbers



Customer Satisfaction Guarantee

When you purchase SMC products, you can be sure you're getting the highest possible quality, reliability and value. SMC stands behind its products no matter what, and even sets its policy down in writing so there's no confusion. In North America and Europe, you get:

- ◆ 30-day Money Back Guarantee
- ◆ Cross Shipment Replacement within 24-hours for next-day delivery*
- ◆ Award-Winning Technical Support*
- ◆ Limited Lifetime Warranty on Most Products

No other vendor offers as comprehensive a guarantee!

Technical Support

SMC's reputation for service and support is unequalled in the industry. And, it's available for the life of the product. For customer support needs:

- ◆ In North America, there's a toll-free number for SMC's award-winning Technical Support Department

* Available in North America and Western Europe.

- ◆ In the UK, there's another Technical Support Department with Freephone from Europe
- ◆ In Asia, there are SMC System Network Engineers in Australia, Singapore and Japan

Technical Support Hotlines

For assistance every business day, call or fax:

- ◆ From U.S.A. and Canada
(8:30 AM - 8:00 PM Eastern Time)
(800) SMC-4-YOU (Phone)
(516) 435-6250 (Phone)
(516) 434-9314 (Fax)
- ◆ From Europe
(8:00 AM - 5:30 PM Greenwich Mean Time)
44 (0) 1344 420068 (Phone)
44 (0) 1344 418835 (Fax)

Bulletin Board Services

Modem settings: 9600,8,n,1 (unless otherwise noted)

NY: (516) 434-3162 (connect speed up to 14,400)

France: 33 (1) 39.73.57.00

UK: 44 (0) 1344 418838

e-mail Addresses

Receive responses to your technical support questions by the next business day.

- ◆ techsupport@smc.com
- ◆ european.techsupport@smc.com

CompuServe

SMC Forum: at prompt (!), type GO SMC

Internet

- ◆ World Wide Web: <http://www.smc.com/>
- ◆ FTP Site: <ftp.smc.com>

EliteFax™ (SMC's Fax-on-Demand System)

- ◆ From U.S.A. and Canada
(800) SMC-8329
- ◆ Elsewhere
(516) 435-6107

SMC Offices Worldwide

For information, call or fax:

- ◆ SMC—Headquarters
Hauppauge, NY
Phones: (800) SMC-4-YOU
(516) 435-6000
Fax: (516) 273-1803
- ◆ SMC—Canada
Oakville, Ontario, CANADA
Phone: (800) SMC-4-YOU
- ◆ SMC—Latin America
Oakbrook Terrace, ILLINOIS
Phone: (630) 916-7007
Fax: (630) 916-6304
- ◆ SMC—France
St. Germain-En-Laye
FRANCE
Phone: 33 (1) 30.87.42.42
Fax: 33 (1) 30.61.41.34
- ◆ SMC—Europe
Bracknell, Berkshire, UK
Phone: 44 (0) 1344 418800
Fax: 44 (0) 1344 418828
- ◆ SMC—Northern Europe
Bracknell, Berkshire, UK
Phone: 44 (0) 1344 418820
Fax: 44 (0) 1344 418826
- ◆ SMC GmbH—
Central Europe
München, GERMANY
Phone: 49 (0) 89 92861-0
Fax: 49 (0) 89 92861-230
- ◆ SMC GmbH—
E. Europe/Middle East
München, GERMANY
Phone: 49 (0) 89 92861-142
Fax: 49 (0) 89 9101934
- ◆ SMC—South Africa
Sandton, Johannesburg
SOUTH AFRICA
Phone: 27 (0) 11 784-0414
Fax: 27 (0) 11 784-0363
- ◆ SMC—Asia Pacific
SINGAPORE
Phone: (65) 336 1800
Fax: (65) 339 6625
- ◆ SMC—South Asia
SINGAPORE
Phone: (65) 336 1800
Fax: (65) 336 3955
- ◆ SMC—Australia
Sydney, AUSTRALIA
Phone: 61.2.9238.2206
Fax: 61.2.9238.2220
Melbourne, AUSTRALIA
Phone: 61.3.9653.9461
Fax: 61.3.9653.9548
- ◆ TMC—Japan
Tokyo, JAPAN
Phone: 81 (3) 57212271
Fax: 81 (3) 57212270

SMC is a registered trademark; and EliteFax, EliteView, EtherEZ, EtherPower, EZ Card, EZ Hub, EZ Switch, EZStart, SimulTasking, SuperDisk, SwitchReady, TigerHub, TigerStack and TigerSwitch are trademarks of SMC Networks, Inc. Other products and company names are trademarks or registered trademarks of their respective holders.

